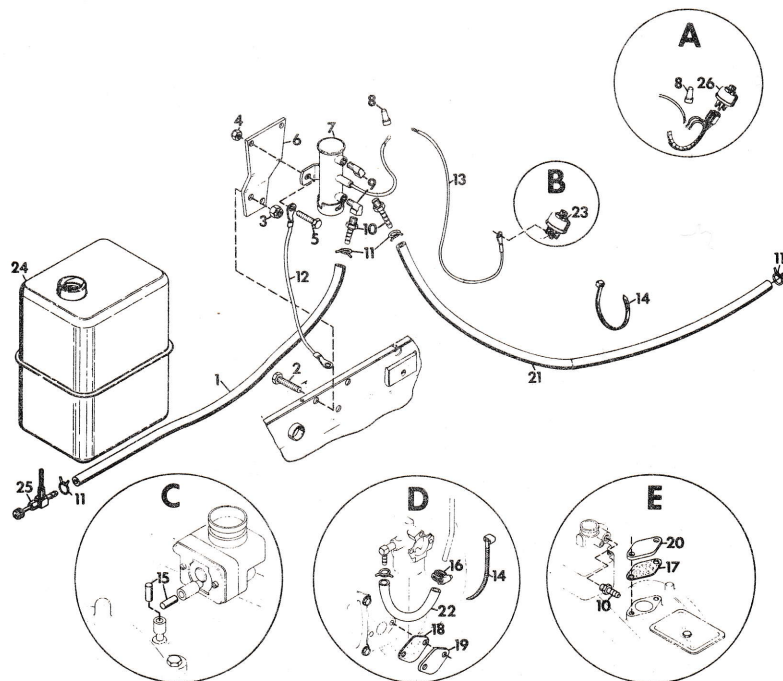


GRAVELLY ILLUSTRATED PARTS LIST

CLARKE-GRAVELLY CORPORATION
A Studebaker-Worthington Company

NAME: ELECTRIC FUEL PUMP KIT

PART NUMBER(S): 24643



ITEM NO.	PART NO.	QTY.	DESCRIPTION
1	24645	1	Hose, Fuel Pump Inlet
2	180120	2	Bolt, Hex; 3/8-16 x .750
3	456004	2	Nut, Lock; 3/8-15 Washer Insert Hex
4	419454	2	Nut, Lock 1/4-20 Washer Insert
5	180021	2	Bolt Hex 1/4-20 x 7/8
6	24644	1	Bracket, Fuel Pump
7	24649	1	Pump, Electric Fuel
8	11763	2	Nut, Wire
9	24648	2	Fitting, Fuel Pump 90° Elbow
10	13502	3	Connector
11	7216	4	Clamp, Fuel Hose
12	24647	1	Wire, Fuel Pump Ground
13	24655	1	Wire, Fuel Pump
14	10629	4	Tie, Cable
15	24642	2	Pin, Flow Restrictor
16	24654	1	Clamp, Adjustable Hose
17	24651	1	Gasket, Cover Onan CCKA
18	24653	1	Gasket, Cover
19	24652	1	Plate, Pump Pad
20	24650	1	Plate, Cover Onan CCKA
21	24646	1	Hose, Fuel Pump Outlet
22	25010	1	Hose, Fuel Kohler Engine

Following items numbers listed below are shown for clarity and are not included in kit.

23	Switch, ignition, with Onan CCKA Engines
24	Tank, Fuel
25	Valve, Fuel: 90 deg. reverse flow
26	Switch, Ignition

NOTE: Circle "A" pertains to tractors with Onan B43M and B48M Engines and all Kohler Engines except the K181, 8 HP Engine.

Circle "B" pertains to tractors with Onan CCKA Engines.

Circle "C" pertains to tractors with the Onan B43M and B48M Engines.

Circle "D" pertains to tractors with all Kohler Engines except the K181, 8 HP Engine.

Circle "E" pertains to tractors with Onan CCKA Engines.

To continue its program of quality and design improvement, the manufacturer reserves the right to change specifications, designs and prices without notice and incurring obligation.

Form No. 25105 (10-78)

Printed in U.S.A.